



**London
Streets**

- **Overview of road maintenance**

Andy Best, Senior Highways Operations Manager

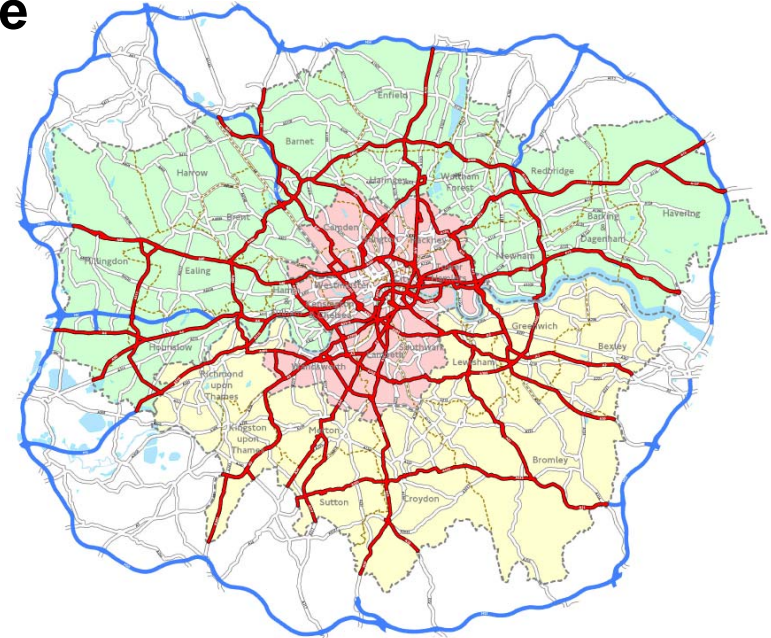
- **Permit scheme update**

Mark Beasley, Head of Planned Interventions



Transport for London Road Network

- TLRN, 580km of highway infrastructure
- 2600 lane kilometres of road
- 5% of London's road network
- 30% of the traffic
- 2000+ Structures
- 45,000+ lighting points
- 45,000 gullies and 800km of drains
- Maintained by three Highway and Maintenance Works Contractors and one DBFO Contractor



How we prioritise and carry out maintenance activities

- **Inspections**
 - Safety inspections (operational)
 - Planned condition inspections (strategic)
- **Reactive and cyclical maintenance**
- **Planned investment**



Reactive activities

- Safety / routine inspections and fault reports
- Maintenance activities
 - Planned (short term)
 - Reactive
 - Cyclical
- Works prioritised according to severity of defects
- Reasons for failures
- Funding of reactive work



Planned Inspection regime

TLRN Condition Surveys

Visual



Mechanical



Capital Budget

- Initial 2010/11 allocation of £21.1m for road resurfacing schemes
- Increased to £24m following winter 2010
- Overall capital maintenance budget remains at £47.9m
- Additional DfT allocation £764.1k for winter damage in 2010 and £810k has been claimed for 2009



Standard of works

- **Design Manual for Roads & Bridges**
- **Utilities use Specification for the Reinstatement of Openings in Highways**
- **Specification for highway works**
- **TfL Streetscape Guidance**

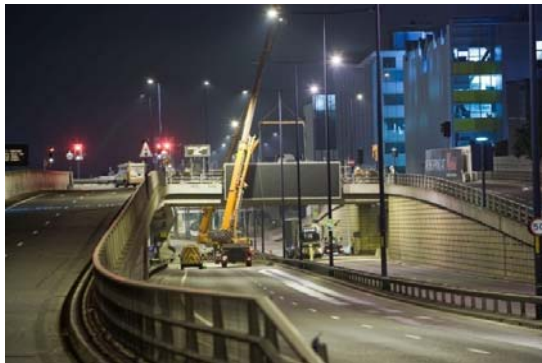


Utility patch failure



Smoothing traffic flow

- Block closures
- Timing of works
- Borough liaison
- Coordination with utilities



Planned strategy – key aspects

- **Improve cooperation and communication between Highway Authorities and Utilities**
- **Promote the adoption of the Mayor's Code of Conduct throughout London**
- **Incentivise works promoters to minimise disruption on the Highway**



Update on permit scheme

- **Permitting**
- **Sharing long term plans**
- **Working outside peak hours**
- **First time reinstatement/plating**
- **Greater co-ordination of minor works**



Workathons – Borough High Street

- 7 months ... 4 organisations ... 11 months disruption avoided



Looking for even more progress



tfl.gov.uk

